

Hi everyone,

Thank you again so much again for all your prayer and financial support. Praise God that there have been some new partners, so that I have now reached 85% of my financial support target!!

God willing, we are still believing that God will provide the remaining 15% of regular payment pledges that I need before the early May deadline in order to go to OC (Orientation in Singapore) in July 2026 and then to Japan.

SJEC Thanksgiving Service – Grahame and Cathy Smith Retirement

On the first Sun of March, we had the Thanksgiving service for the retirement of Grahame and Cathy Smith from SJEC(Sydney Japanese Evangelical Church). People who had been blessed by the ministry over the last 17 years filled the church to overflow. We had a great time of reflection and celebration, even though we already miss them. I have only been part of this church for 2 years, but it has been a great blessing to me and it was amazing to see how God had blessed so many people through it (many are also now back in Japan either returning home or as missionaries).



We pray that God will continue to use this ministry to bless Japanese people in Sydney and beyond.



Talks at Heart for Asia Event and The Well Church

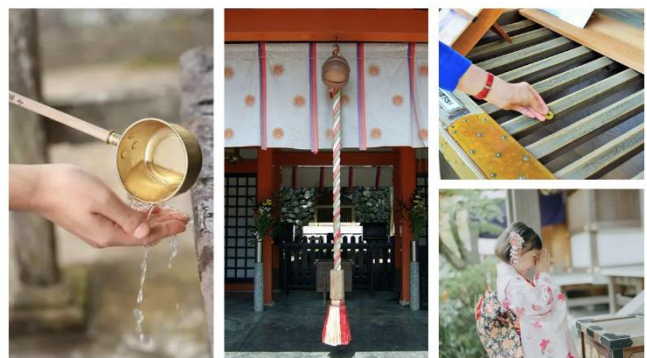
I am thankful to have the opportunity to share about mission to Japan at the 'Heart for Asia' event and also at my church, "The Well Church".

At The Well Church, I shared about some of the Shinto gods/deities and rituals related to communicating with them. Particularly, one well-known Shrine in Kyoto called Fushimi Inari Taisha Shrine, where the god



Inari (god of Rice) is said to dwell, who people pray to for favour and protection over their businesses.

When people go to a Shrine they purify themselves with water first, then ring a bell to let the deity know of their presence before, giving a small monetary offering and then bow twice, clap twice and offer their prayer. Hoping the god will hear them and have favour on them.



There are other things like writing prayers on a wooden board (Ema), buying a good luck charm for protection (Omamori), picking out a fortune (Omikujji) and rituals like stroking a particular statue symbolic of a certain thing e.g. stroking the Bull, pictured, is said to give wisdom or healing.

Japanese people especially attend shrines when they have big events or issues in their lives like baby dedications, exams, starting a job or business, praying for their family, for healing etc. Also, at New Year most Japanese people attend a Shrine after midnight with their families to pray for blessing over the new year.

All are things that through Jesus, those of us who believe in him, do not have to do, in order to speak to our God of the bible through prayer, and we know that he is always listening and his heart is turned towards us!

Please continue to pray for Japanese people to be able to have the opportunity to hear the gospel news (95% have never heard) and to open their hearts to accept Jesus as their Saviour.

Meeting with OMF Japan

A couple of weeks ago I had a zoom meeting with a team of leaders (located in Japan and whom I have never met in person) from OMF Japan. Since the meeting, I have filled out a personal profile and answers to questions about my experience, skills, hopes and things I am especially passionate about in regards to Ministry. This is to help them work out the Church/Ministry placement, that will be best for me, for OMF Japan as an organisation and of course for the church/people of Japan.

I hope you all have a blessed Easter, as you remember that our Saviour Jesus loves us so much that he paid the price for our sins, so that we can have free communion with the Father and the joy of eternal life with him. I will once again, be spending Easter with my family.

Please let me know how I can be praying for you too!!

Love and God bless,

Wendy Cumberworth

OMF Appointee Missionary

wendyjcumb@gmail.com

<https://omf.org/au/worker/wendy-cumberworth/>

Financial Update

*Thank you so much to all who have partnered with me financially by pledging regular monthly amounts so far, of whatever amount they've decided with God to give, **so that I now have 85% of the pledges that I need.** These funds will become a monthly allowance for life and full-time ministry in Japan. **I hope to be able to now have 100% of the amount needed pledged in God's timing, for the early May deadline in order to leave in July 2026.***

***Please pray for people and churches, who are able, to consider how they may be able to play a part in this ministry by financial partnership with a regular pledge of financial support with this exciting mission to tell the good news of the Gospel to those in Japan, to the many many who have never had a chance to hear it before!** For those unable to give financially at this time, I am so appreciative of your continued prayers and they will also help sustain me in my ministry!*

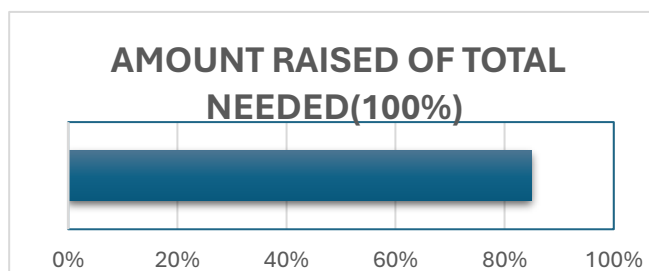
Pledges of regular financial support are counted towards the year's financial goal % that I need to meet to leave for Japan. One-off donations are spread out across the first 4-year term and used for other incidental costs and moving costs etc.

If you would like to partner with me financially, please

visit: <https://omf.org/au/giving/>

For those outside Australia, please contact me for ways to pledge through OMF in your country and currency.

Please don't hesitate to contact me if you have any questions at all about Japan, my mission work and how the finances work!



Prayer Points:

- *Thankful for continued personal provision, especially for accommodation and blessed church families at both churches.*
- *Praise God for the funds raised so far and new partners for this mission recently! Pray for provision of more financial partners of regular pledges to join and support this ministry so that the goal of 100% financial support can be reached by this May, if that is God's timing.*
- *Pray for continued discussions with and within OMF Japan regarding placement in Japan.*
- *God willing, I will go with Nigel (my brother) in April to a church in his area. Pray that he can find community there and a chance to reconnect with God.*
- *Pray for continued personal provision and guidance as I continue to wait for God's perfect timing to leave for Japan.*
- *Pray for The Well Church as we seek God for a larger, more permanent place to meet together, as the church has already pretty much grown (both in number and in our faith) out of our current rented space.*
- *Pray for SJEC as we continue to adjust to this new season of leadership and community.*

Upcoming Events:

Apr 3rd - (Good Friday) – SJEC Combined Good Friday service with Crows Nest Japanese Church

Apr 10th Fri– The Well Church weekly Growth Group (Bible Study) term starts

Apr 22nd Wed – SJEC Weekly Japanese Bible Study term starts

Apr 24/25th Weekend – OMF National Conference

May 11th Tues – Final deadline for 100% of financial target to go to Japan in July

May 15th-17th Weekend – The Well Church Retreat

May 26th Tues – OMF 'Mission Steps' Night (for those interested in perhaps taking steps towards going on mission in some way), Epping Offices